

DesignaKnit 9

UPGRADE FEATURES

Licensing

Two computers

Better licence management

Standard
Garment Styling

Ease table adjustments

Units visible

Original
Pattern
Drafting

View stitch patterns on all pieces

Background image

Geometric shapes

Curves

Merge, Add, Subtract

Measured adjustment

Construct Slope

Align points

Distribute Points Evenly

Other new features

Stitch
Designer

Shadows & Outlines

Spirals

Curves

Advanced tiling

Cut & sew

Autochart

Colour scheme all visible

Panning

Jacquard Corrections

Symbols Text Editor

Integrating

Extended Bird's-eye

Improved lasso

Selection box

Texture patterns

Arranging pieces

Interactive
Knitting

Rib & blousing instructions

Clearer feeders info

Intarsia instructions

Cut & Sew

Other new features

DesignaKnit
Graphics
Studio

Better pattern detail

Automatic colour sampling

Miniature preview

Save settings

Image type reminder

Remove yarns

Tidy image

Miscellaneous

Thumbnails

Printouts

Stitch cable diagrams

Stitch World patterns

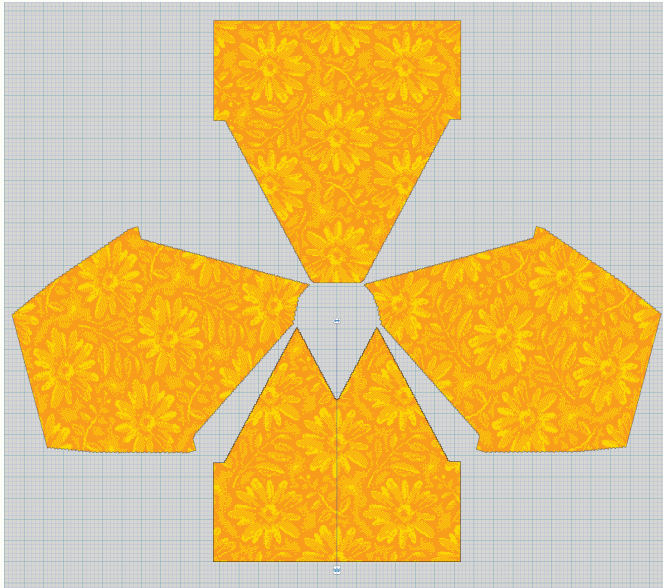
Other new features

Original Pattern Drafting

(Included with product levels HandKnit, Machine Pro, and Complete)

View stitch patterns on all pieces of a garment

The integrated stitch patterns can now be viewed on all garment pieces at the same time, even if they have been rotated relative to the active piece.



It is now much easier to match the stitch pattern on different pieces, arranging repeats so that motifs continue as smoothly as possible across seams.

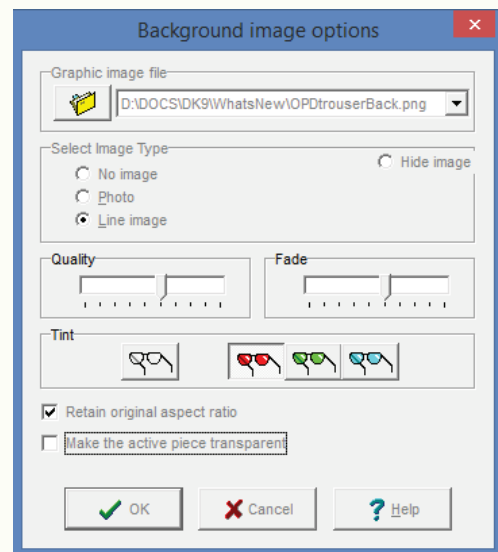
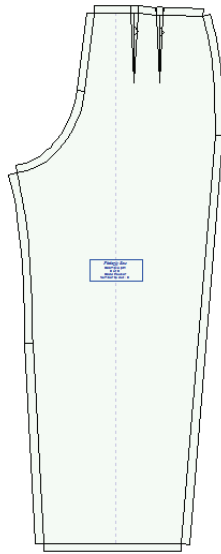
This feature can also be used to try out and compare the appearance of different stitch patterns on a duplicated piece.



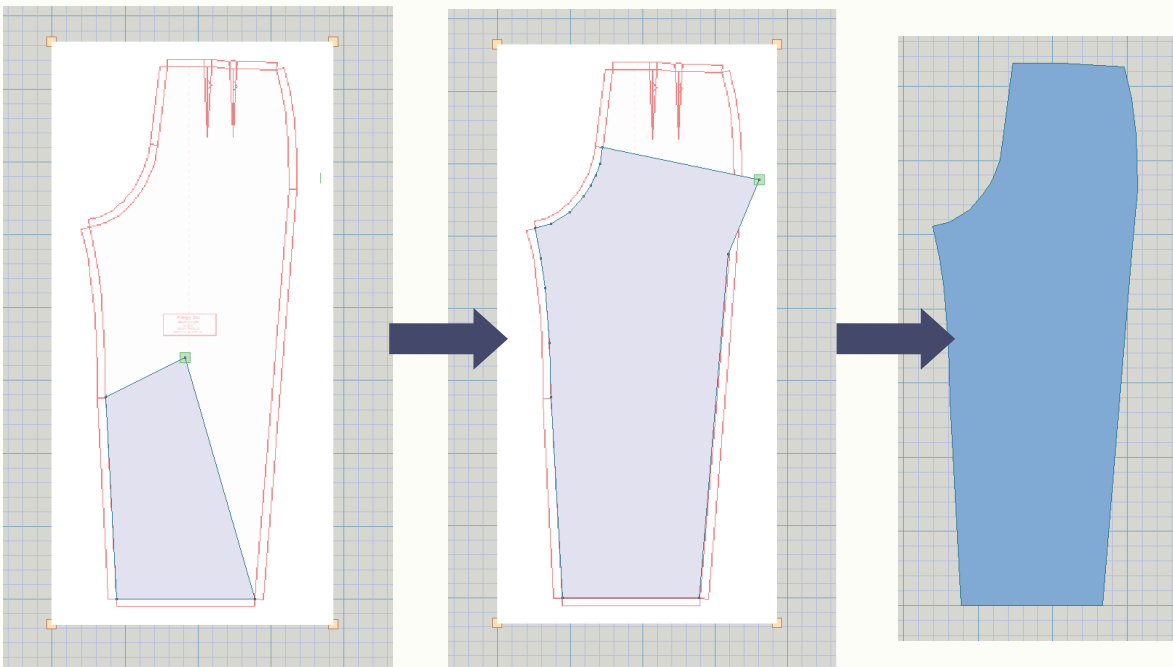
Background image

For each garment piece, a background image can be displayed so that it can be traced to create a piece matching the image. The image may be faded and/or tinted so that it doesn't obscure the outline of the garment piece that is being drawn.

In this example the starting point is a screen shot from Fittingly Sew, but any jpg (etc) image can be traced.



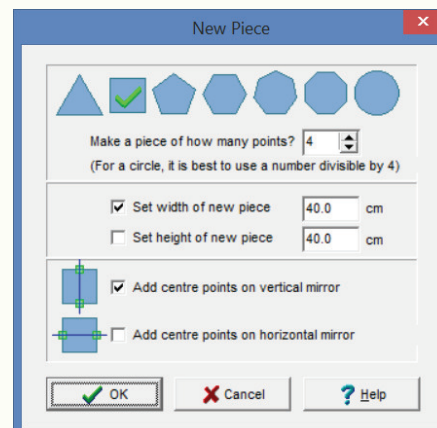
This image is going to be tinted red and faded.



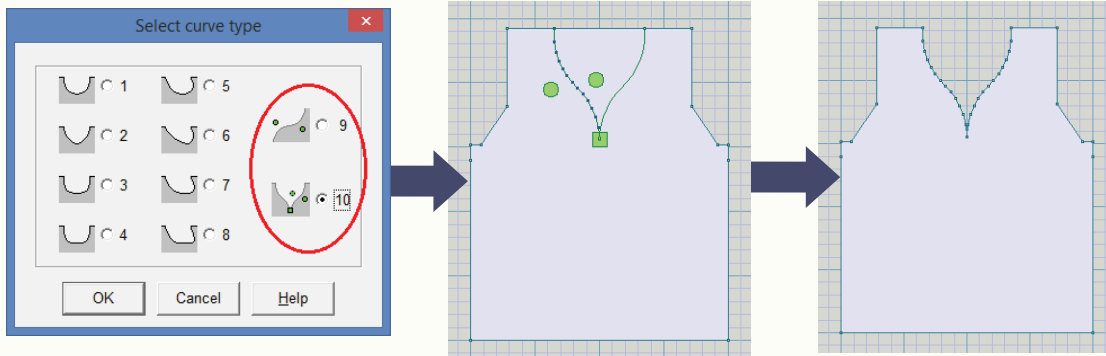
Points are then added using the familiar  button until the trouser piece is complete.

Geometric shapes

The **New Piece** menu option has become extended and instead of just providing a square block it offers a variety of regular polygons: **triangle, square, pentagon, hexagon**, etc leading up to a **circular piece**. The height and width of the piece can be specified in the currently selected units, and points may be placed on the central mirrors.

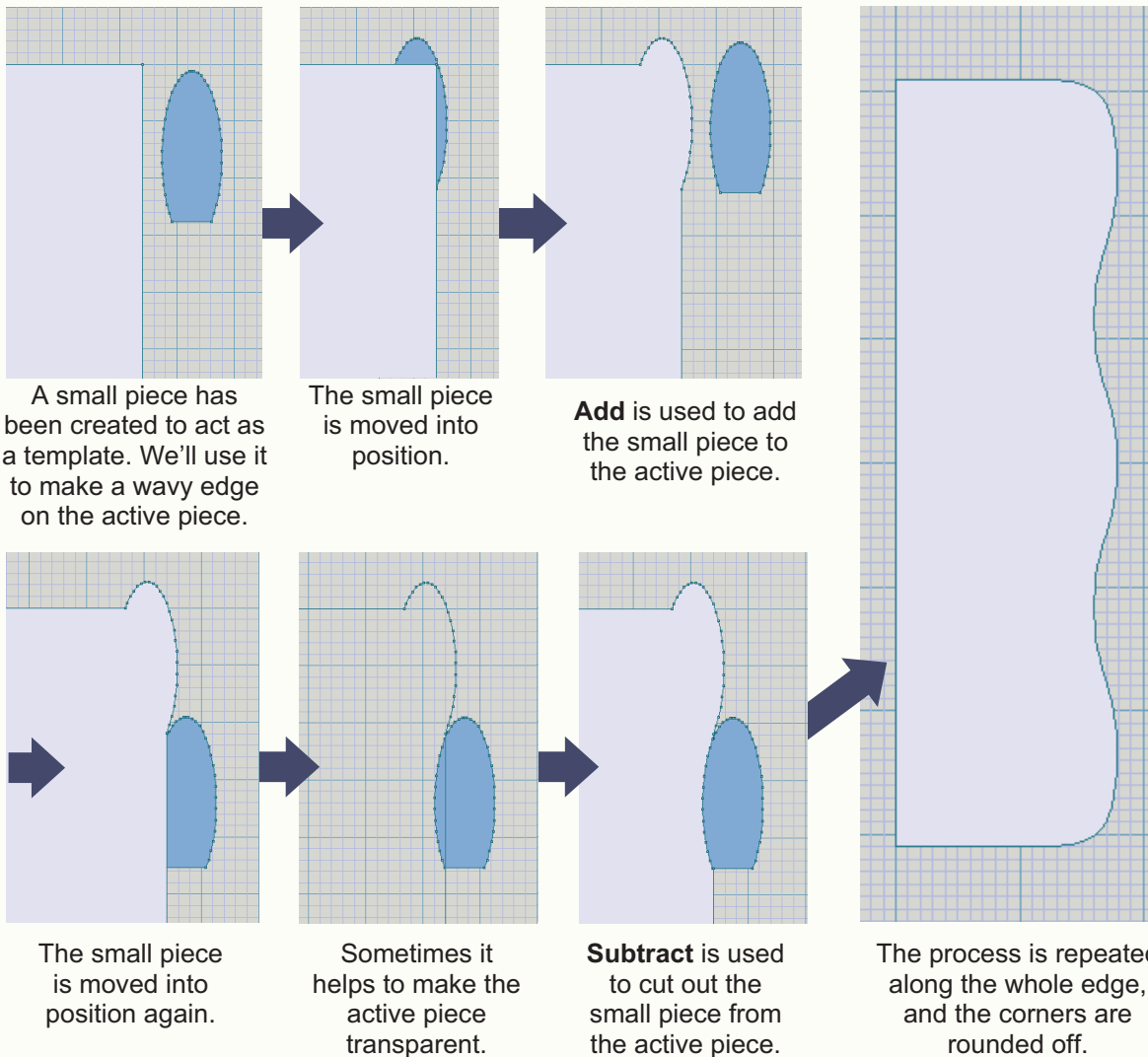


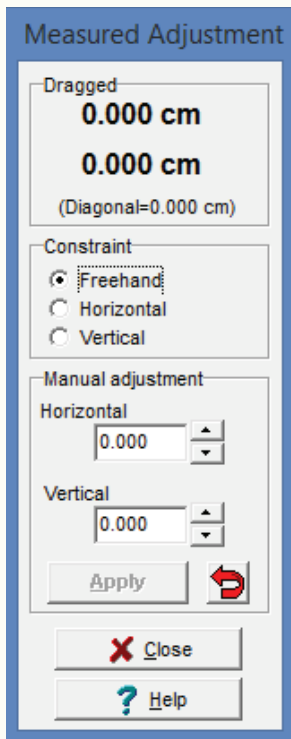
Drawing Curves There are 2 new types of curve: symmetrical and asymmetrical Bezier curves. Here the symmetrical curve is being used to define a neckline. The green handles can be dragged into position to create a huge variety of curves.



Merge, Add, Subtract

When the currently active piece overlaps another piece, the Overlapping Piece menu is enabled and offers 3 new items. Merge combines the two pieces into one; Add combines the two pieces but leaves the other piece intact; and Subtract uses the other piece as a template to cut away the overlapped area from the active piece.





Measured Adjustment

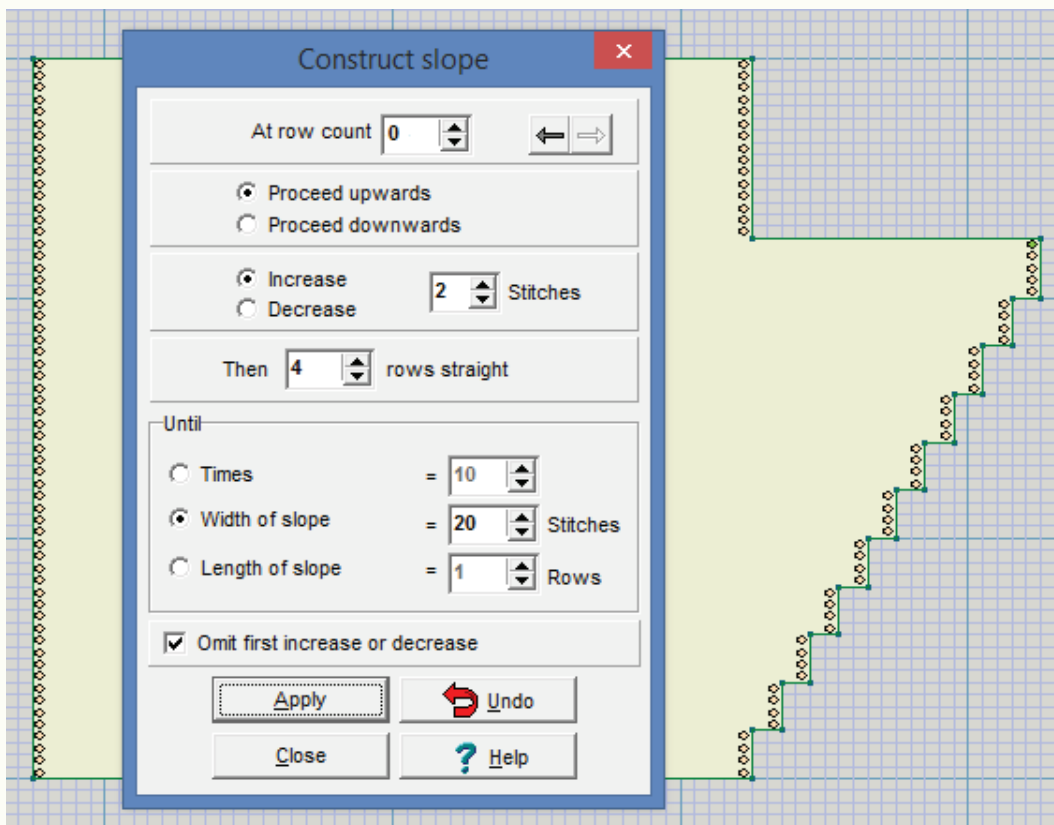
It is now easy to move a set of points by a fixed or measured amount in any direction.

The mouse can be used with optional horizontal and vertical constraints to drag the points, with the distance being shown at the top of the window.

Alternatively a number of centimetres or inches may be entered and the Apply button clicked: the points are then moved by that exact amount.

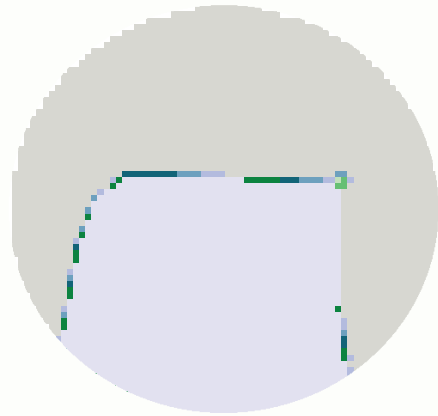
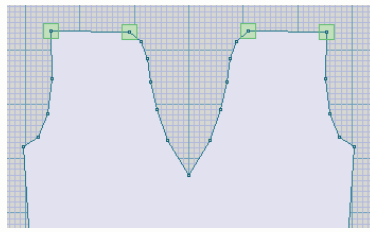
Construct Slope

A slope may now be constructed with a specified increase or decrease every specified number of rows. Just highlight the edge you want and set the row count to where you want the slope to begin.

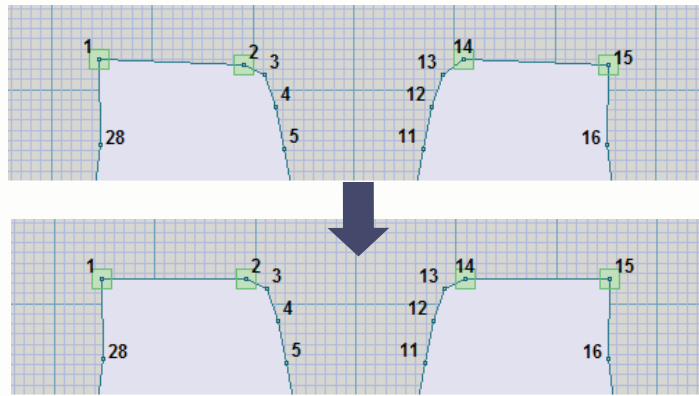
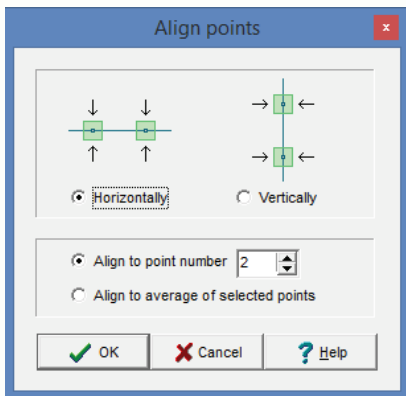


Align Points

When creating your own garment pieces by adding and moving points, it can be difficult to get perfectly horizontal or vertical lines, and this can produce a stitch outline with extra or missing stitches.

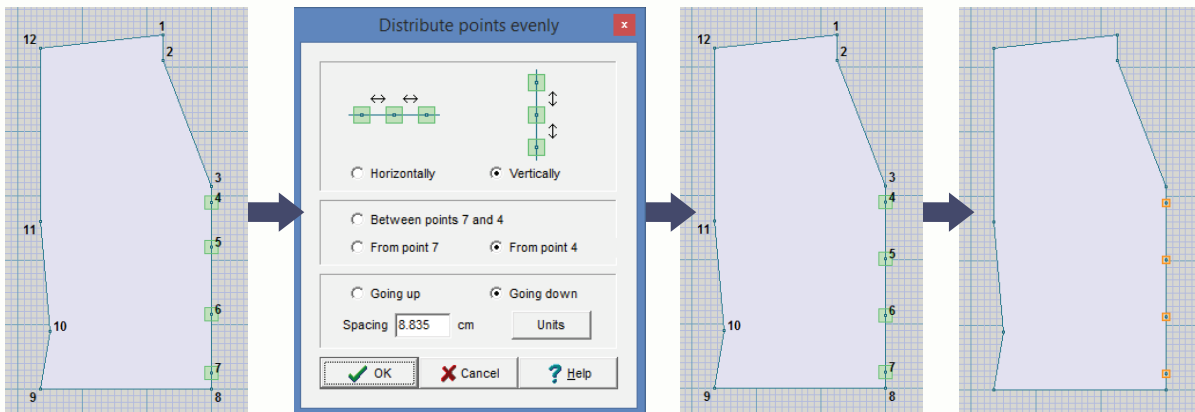


The new Align feature is used here to make the shoulders perfectly horizontal and the same height as each other. The unwanted steps in the shoulders disappear.



Distribute Points Evenly

One of the uses for this new feature is to place Markers for buttonholes.



This cardigan front has had some new points (numbers 4 to 7) added. They have already been aligned vertically, and the Distribute Points Evenly option makes sure they are spaced evenly along the selected edge. Finally, markers are set at the new points in order to generate alerts during Interactive Knitting.

Other new features in Original Pattern Drafting

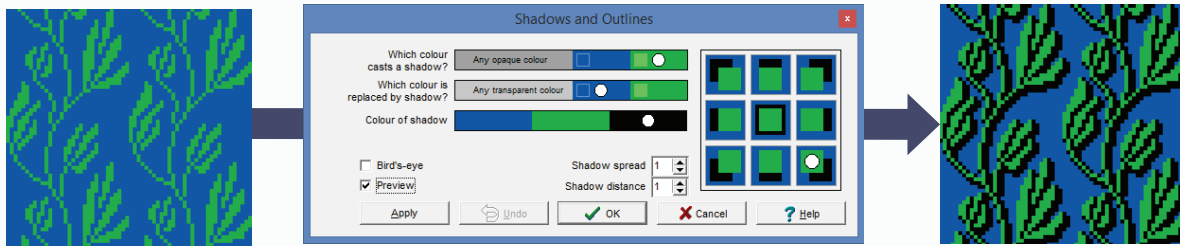
- Control A (Ctrl-A) may be used to select all the points in the active piece, or all the tags (when showing Shaping Methods or Diagonals).
- Any changes made in the Integrate window now cause the main Original Pattern Drafting window to be updated immediately after each change of stitch pattern or starting direction of knitting, instead of waiting for Integrate to be closed.
- There is a new option on the View menu called Measured Edges, that toggles the display of measurements selected using the Measure Edge tool. This allows the measured edges to be hidden without removing them.
- The maximum number of measured edges per garment piece is now 30 instead of 20.
- The Knit Direction Indicator has been streamlined and now only has 2 states instead of 3. When the Indicator is turned on, and the units are set to stitches & rows, and the zoom level shows individual rows, alternate row colouring is done on the background grid to help visualize the direction of knitting. Rows on which the knitting direction is to screen Left are coloured with a Lighter shade, while rows knitted to screen Right are in a darker shade.
- When stitch patterns are shown, there is a tag on the active garment piece which may be dragged with the mouse to adjust the position of the stitch pattern on the active piece. While the mouse is over that tag, the keyboard arrow keys may now also be used as a fine adjustment, moving the stitch pattern by a single stitch column or row.
- When a Handknit stitch pattern is dragged over a garment piece, it can now move vertically by a single row instead of in steps of 2 rows. When the stitch pattern is moved by a single row, the direction of knitting changes and therefore any double row steps in the shoulders and other gentle slopes may change. (If the Knit Direction Indicator is turned on, you will see it move from side to side, and the stitch layout of the shoulders etc changes as the stitch pattern is dragged vertically.)

[Return to start](#)

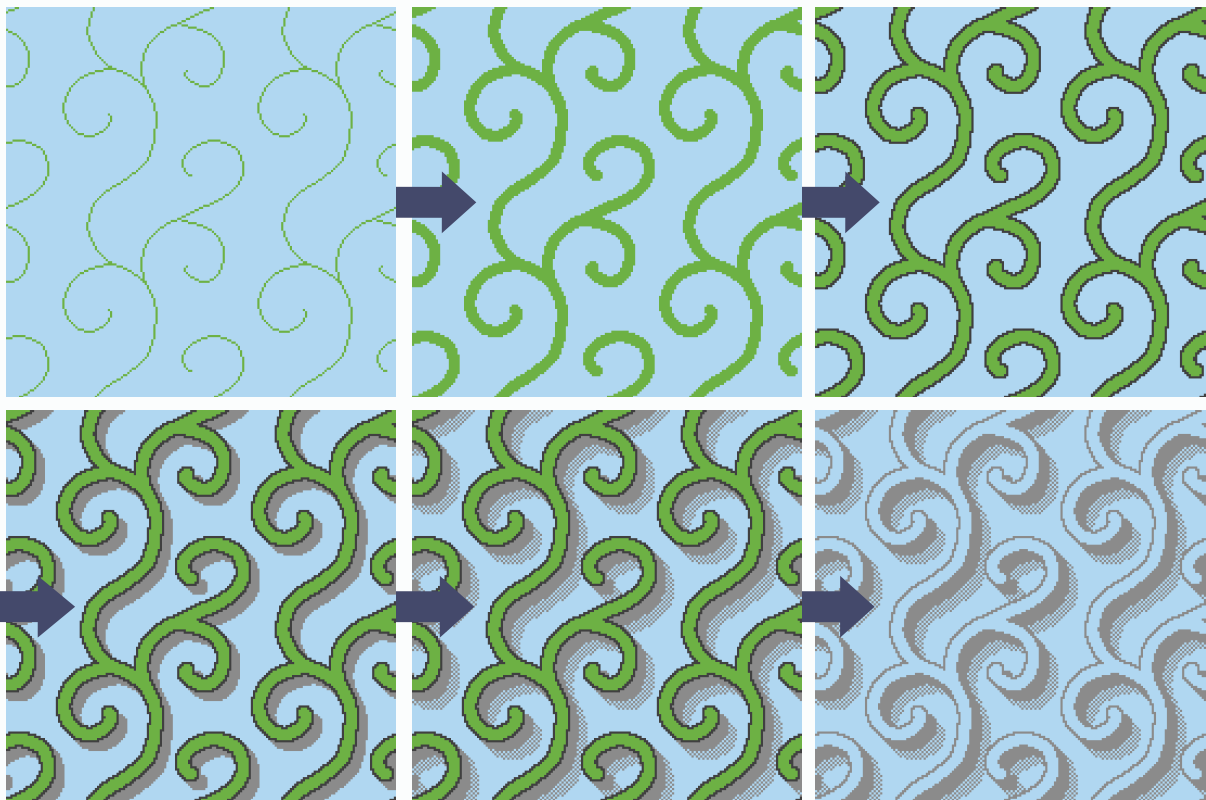
Shadows & Outlines

Stitch Designer

The Modify menu offers an exciting new tool for adding shadows or outlines to motifs.

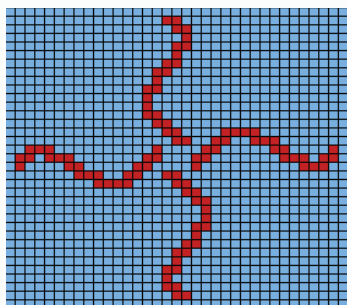


In the following example a line drawing is outlined in the same green to make the lines thicker, then a black outline is added, followed by a solid grey shadow, and then a birds-eye grey shadow. Finally other tools are used to change the 4-colour design back to just two colours.

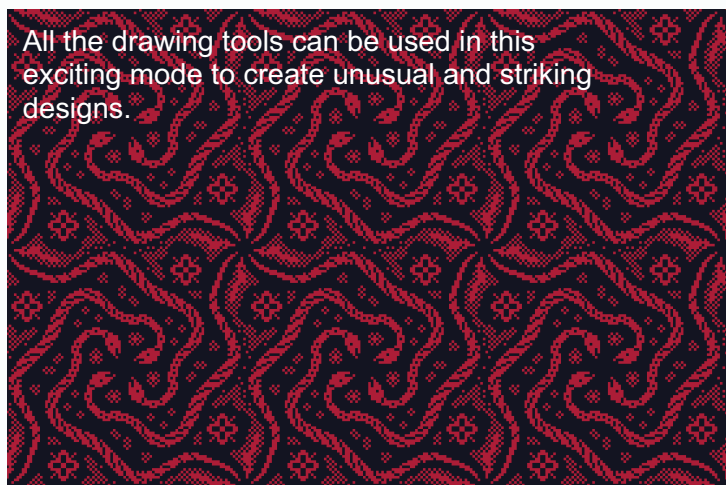


Spiral symmetry option

The kaleidoscopic mirror has a new option for designing patterns with 4-way spiral symmetry.



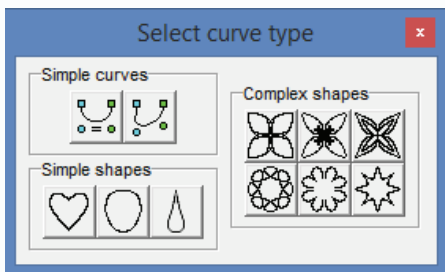
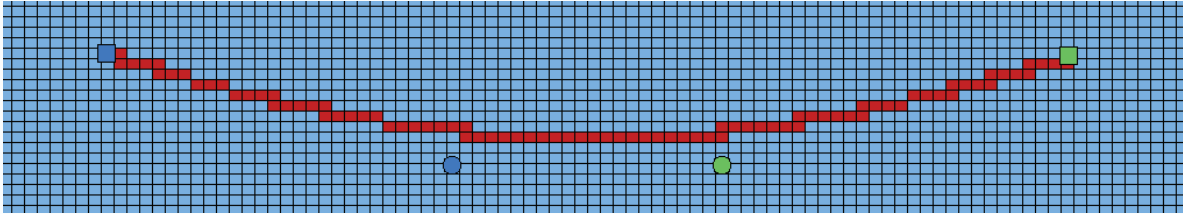
All the drawing tools can be used in this exciting mode to create unusual and striking designs.



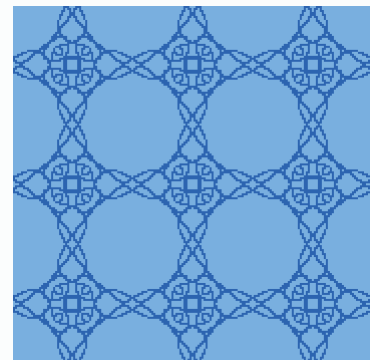
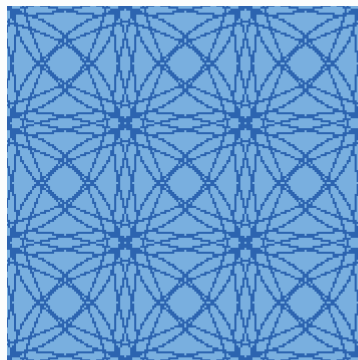
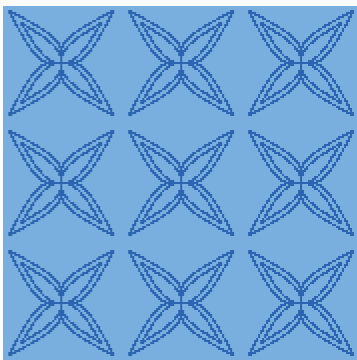
Drawing curves



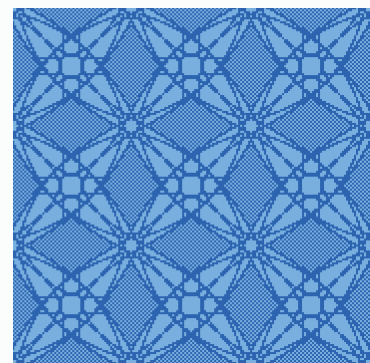
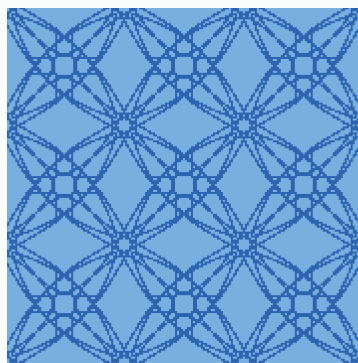
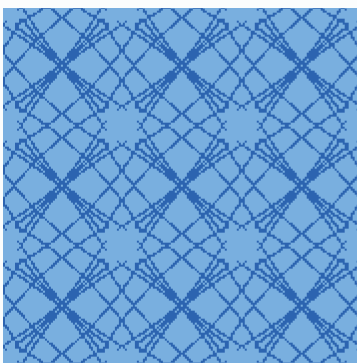
A new drawing tool enables Bezier curves to be drawn by stretching the line in the desired directions using handles. A curve starts off in a tagged selection box and may be resized and repositioned in the stitch pattern using its handles or the selection box tags.



Besides the simple curves there is a choice of symmetrical shapes that you can use as a starting point to create your own stunning, unpredictable and complex patterns. Choose the starting point, set the selection box to the number of stitches and rows you want, and let the magic happen.



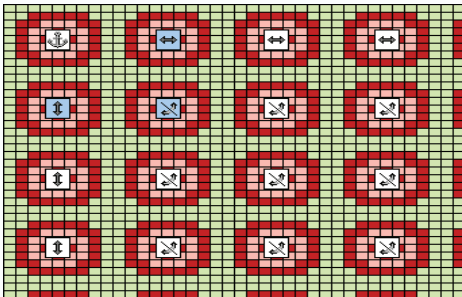
When the curve spans multiple repeats of your original stitch pattern, and the kaleidoscopic mirrors are on, the pattern really takes off. Dragging a curve handle to any random place automatically generates a new intricate variation of the pattern. Experimenting with pattern design has never been this much fun, or so quick to get satisfying results.



The first 5 of these were produced purely with the curves tool. In the last one, the larger spaces have been flood filled with birds-eye in order to decrease floats and make the pattern suitable for Fair Isle knitting.

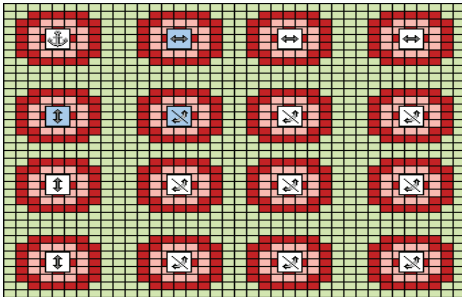
Advanced tiling

Tiling has been massively upgraded. Exciting new features have been added to the Tile Horizontal and Vertical Border options from the Edit / Import menu.

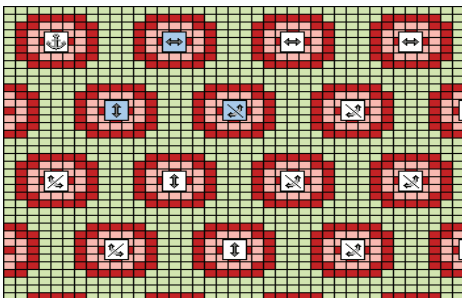


Tiling a pattern evenly within a given target area, such as, for example, half a dozen repeats across the back of a jumper, can now easily be achieved.

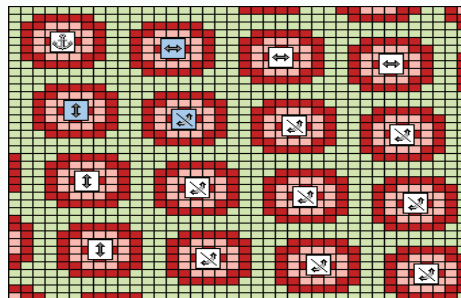
The first picture shows the default perfectly regular arrangement of tiles, obtained by dragging with the grey tags. Depending on the size of the motif and the size of the target area, the motif may or may not fit an exact number of times into the required area.



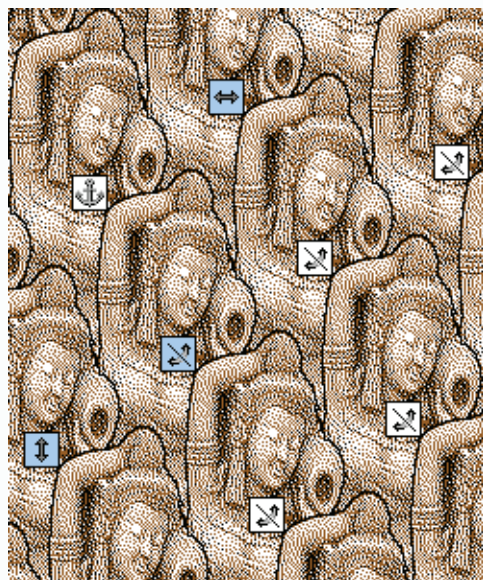
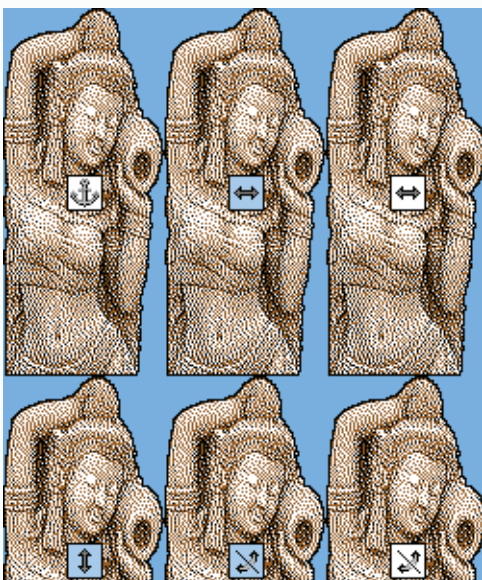
The second picture shows the tiles automatically distributed as evenly as possible throughout the selected part of the stitch pattern. This is done easily by dragging the white tags.

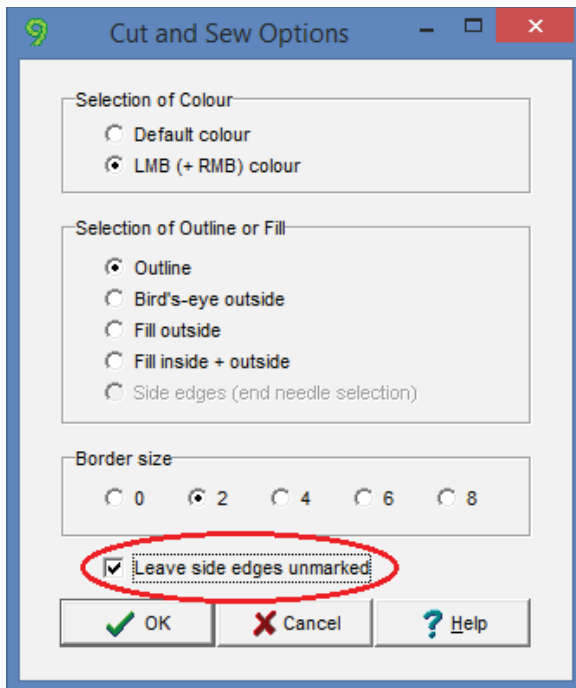


The third & fourth pictures are examples of skewed arrangements of tiles.



Dragging the motifs towards each other so that they overlap, and using a transparent background yarn, enables them to be arranged in interesting ways. How the motifs overlap can be controlled by selecting which corner of the motif is on top.





Partial cut & sew

The option *Leave side edges unmarked* has now been added.

This feature makes it possible to combine conventional side seam edge shaping with cut & sew necklines. The necessary double-row steps can be used for shaping shoulders etc., while any necklines etc are done using the neater cut & sew single row steps.

Autochart



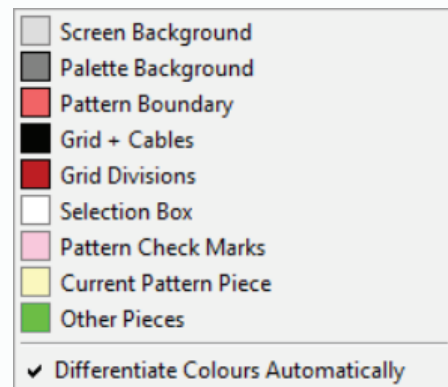
Autochart now automatically adds these stitch symbols to the Palette so that they are ready to be used to mark the shaping.

It also no longer leaves a border around the edge of the new pattern.

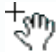

Colour scheme all visible

A coloured square has been added next to each Colour Scheme menu item, so that the entire colour scheme settings for the currently open stitch pattern can be seen at a glance.

At the bottom of the Colour Scheme menu there is a new option *Differentiate Colours Automatically*. When ticked, it automatically makes most of the items on the Colour Scheme menu easily distinguishable from each other and from the yarn colours.



Panning

It is now possible to pan around a zoomed-in stitch pattern by dragging it, as an alternative to using the scroll bars. When no drawing tool is active and no selection box is visible, and the view is zoomed in so that the horizontal or the vertical scroll bar (or both) are visible, the cursor changes to a flat hand with a small cross  and the stitch pattern can be panned by dragging with the left mouse button. Whether zoomed in or not, when inside the selection box the cursor changes to  indicating that the selection box contents may be dragged.

Better Jacquard Corrections

Automatic correction of Jacquard errors has been significantly improved, especially for large stitch patterns derived from photographic images. In DesignaKnit 8, each error stitch was corrected by copying the colour from the previous or following row, and this could result in a noticeable alteration of the pattern, with one or more colours becoming unduly dominant in some parts of the pattern. It is often possible for a Jacquard error to be corrected instead by **exchanging** the colours in adjacent rows, and this way of correcting the sequence of yarns has now been implemented. As a result, the fine detail of the pattern is much better retained during the correction process. This method of correcting Jacquard errors and the new dithering methods of converting graphic images in DesignaKnit Graphics Studio combine to produce stunning conversions of photos to multicolour stitch patterns.



This 200 x 280 three-colour Jacquard pattern was produced from a photograph using Graphics Studio's [new conversion process](#). Here is the stitch pattern before Jacquard yarn sequence errors have been corrected.



This auto-correction by DesignaKnit 8 introduced some noticeable addition of the pale yarn.



This auto-correction by DesignaKnit 9 results in changes that are less noticeable.

The Stitch Symbols Text Editor

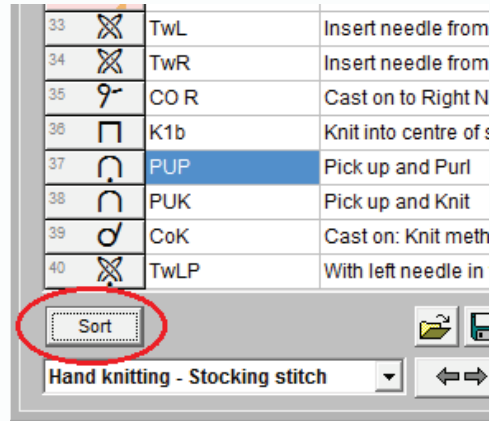
Changes have been made to the Stitch Symbols Text Editor (accessed from Symbols Organizer) including...

(a) Hints have been added to explain the functions of the buttons.

(b) The size and position of the Text Editor window are now remembered across sessions of DesignaKnit.

(c) The new Sort button makes it easier to find a symbol from its ASCII number by sorting the table into ASCII numerical order.

(d) If the text is changed and the Text editor exited without saving, the prompt that now appears has more explicit options to either Return to Text Editor or Continue to Symbols Organiser.



Integrating a stitch pattern

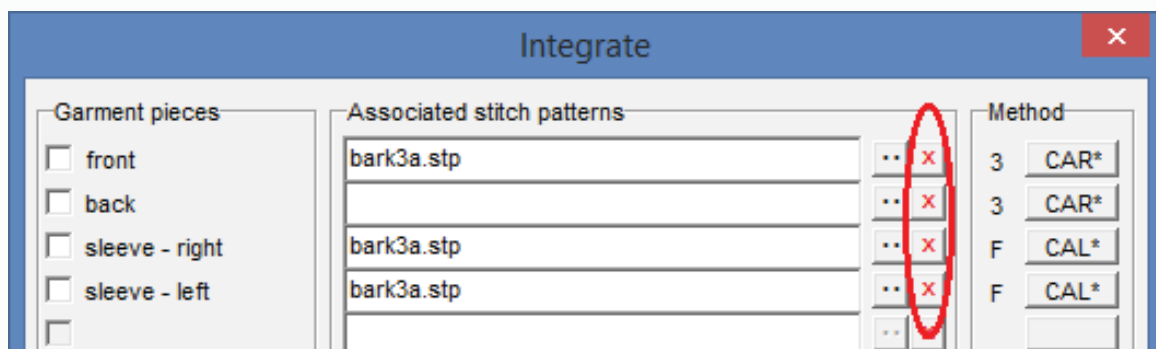
(a) An unintegrated piece no longer becomes automatically integrated with the stitch pattern that is currently open.

(b) When a shape file is open and then a stitch pattern file is opened, any pieces that had previously been integrated with that stitch pattern are now displayed on the pattern automatically.

(c) Selecting Shapes / View All Pieces in DesignaKnit 9 automatically integrates only those pieces that had previously been unintegrated.

(d) When a garment piece is dragged to a new position that overlaps or is completely outside the existing stitch pattern repeats, the number of repeats is now adjusted to accommodate the new position of the piece.

(e) In the Integrate window, any existing stitch pattern filename for a given piece can now be removed by using the new red X button that is located to the right of each file open button. Any pieces that are to be knitted plain can easily be made unintegrated.



Extended Bird's-eye

The bird's-eye tool button now has 3 states, of which the first two work as before: off and on.

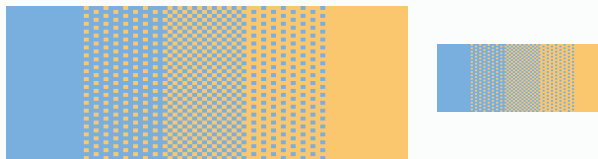


When drawing with the left mouse button, the third position produces a pattern that is more sparsely dotted than normal bird's-eye.



When drawing with the right mouse button, the colours are swapped.

The new birds-eye feature therefore offers 3 mixtures of the left and right mouse button colours, creating an impression of additional colours when zoomed out.



Improved Lasso

Dragging a motif or stitch cable using the Lasso Tool now updates the status bar at the bottom of the window with the position of the dragged object in the stitch pattern. The displayed information is similar to that shown when resizing the selection box or dragging its contents.

29..33 , 230..235 (5S x 6R = 1.4 x 1.4 cm)

Selection Box

The F4 key can now be used to toggle between no selection box, untagged box, and tagged box.

Texture Patterns - additional checking

Additional checking is provided for patterns with Right or Wrong facing texture methods that contain more than one yarn colour. These alerts may be given when appropriate:

- (a) A pattern of yarn colours does not produce needle selection.
- (b) Opaque yarn colours take priority when deciding which is the actual yarn colour on any row.
- (c) Colours used for memo purposes should be given Transparent status.
- (d) A colour changer is in use, and the yarn changes when the carriage is at the wrong side for the changer.

Warnings may be given when using Stitch Designer's *Check / Check once for colour changes etc* option, when downloading, printing templates, or starting Interactive Knitting.

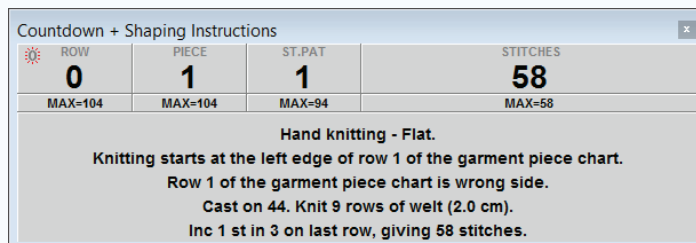
Easier to arrange garment pieces

If a garment piece is dragged to a new position that overlaps or is completely outside the visible stitch pattern repeats, the number of repeats is now adjusted automatically and immediately to accommodate its new position

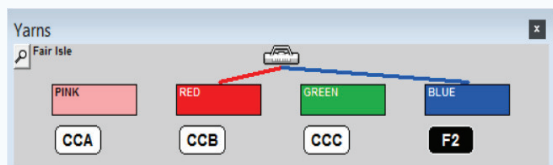
Interactive Knitting

Rib & blousing instructions

At the start of each hand knitted Standard Garment Styling piece, the Countdown + Shaping Instructions window now includes information about welt / rib and blousing (eg inc 1 st in 3 on last row).

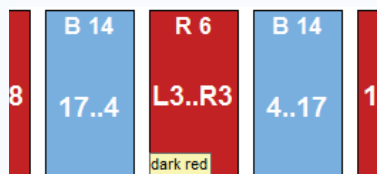


Clearer feeders info



The Yarns window shows a label for each used yarn. When the colour changer is in use, the label now shows the colour changer position, for example CC2 or CCB. When the changer is not in use, other possibilities include J2, J3 etc. to indicate Jacquard yarn sequence numbers, or FA/FB (Brother) and F1/F2 (Silver Reed) for Fair Isle."

Intarsia instructions



When hand knitting, or knitting intarsia on a machine, the Yarns window shows the colours in use for each row or pass of the carriage. The number of stitches for each yarn colour is now shown next to the yarn symbol at the top of each colour block. Also, when the mouse is moved over one of the yarn colours, the name of the yarn now appears at the bottom left of the yarn colour.



Partial Cut & Sew

Patterns of any knit method can now be knitted as one section with the neck shaping done by cut and sew and the side seams by normal shaping methods. The option is enabled when a piece has a neckline or other shaping that normally requires knitting in more than one section. (The option is ticked and disabled when the method of knitting is Jacquard or AG50 intarsia because these methods *always* require knitting in one section.)

Other new features in Interactive Knitting

New Menu Options: The convenient new *Resume at Bookmark* (when hand knitting) or *Resume from Last Stop* (for machine knitting) can be used to resume knitting from the last 'stopped' position

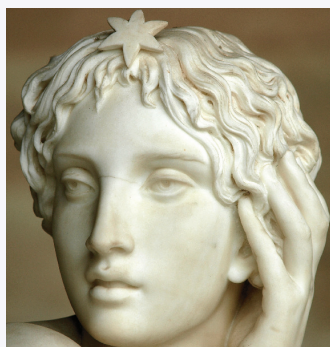
Jacquard separation method: There are new checks for the correct settings for knitting single or double bed Jacquard. If a pattern has a yarn colour that is unused in some rows, and it has not been suppressed, it is unsuitable for single bed Jacquard. If the separation method is A (which is for single bed) then this pattern will generate a warning. If some yarns have been suppressed and the method is B (which is for double bed) there will be a different warning: the user is advised that the tension may be uneven and that there may be vertical floats at the edges.

Control colour changer feeders: The feeder positions can be controlled by assigning Memo numbers to the different yarns in Stitch Designer for Fair Isle, texture patterns and Jacquard.

DesignaKnit Graphics Studio

Better pattern detail

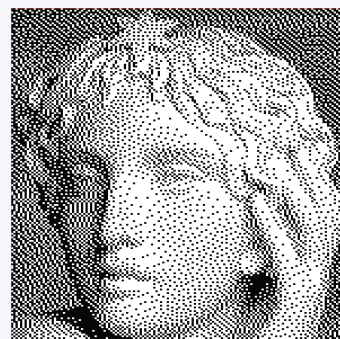
DesignaKnit now has an additional method for converting photographic images to stitch patterns, capturing the original image in much better detail.



Original photo



Conversion to 2 colours using the DesignaKnit 8 method with bird's-eye



Conversion to 2 colours using the new DesignaKnit 9 method



Original photo



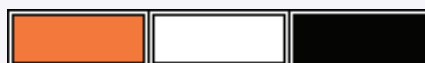
Converted to 2, 3, and 4 colour stitch patterns

Automatic colour sampling

The Yarn colours window now has an Auto button which can be set to discover between 2 and 8 colours, as required. The resulting stitch pattern can appear to contain many more colours because of the careful distribution of yarns, as can be seen in this example in which the cat photo has been converted to a stitch pattern of 140 stitches by 204 rows, using only 3 yarn colours altogether.



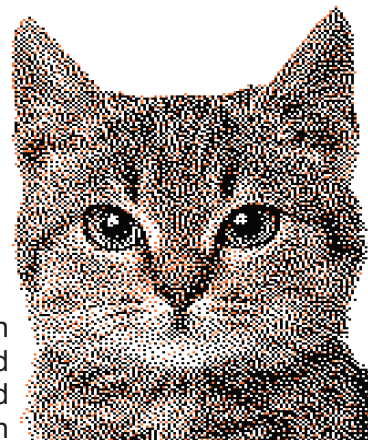
Original photo



Using just these 3 yarn colours!

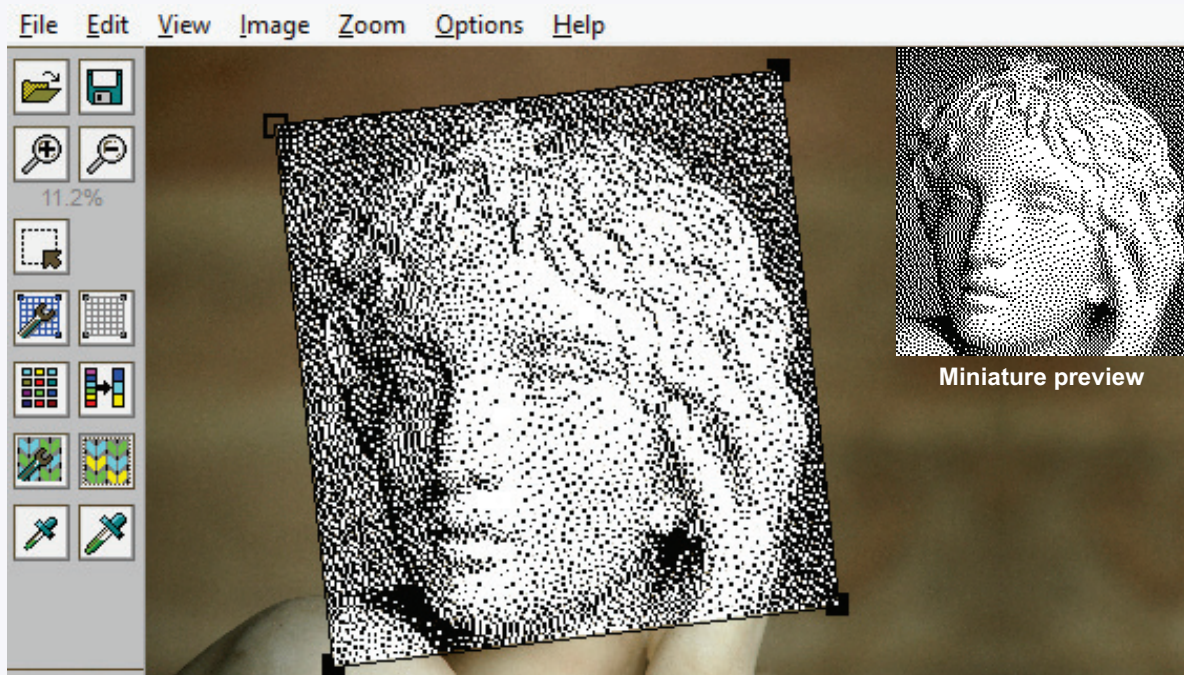


The resulting stitch pattern has been auto-corrected for 3-colour Jacquard knitting, and is also suitable for hand knitting without correction



Miniature Preview

Conversion Settings for Picture now includes an additional option: "Show preview at one pixel per stitch and per row". If selected, a miniature preview of the finished knitted result is shown at the top right of the main window in addition to the preview in the main workspace.



It is useful in 3 ways:

- It enables the finished effect to be visualised more easily. The new dithering looks better when zoomed out because of the way it can use highly contrasting yarn colours to create subtle differences in shades.
- When converted stitch sizes are small on the screen, the pixellation in the main image caused by converting to stitches and rows can interact confusingly with the screen's own pixellation. Having a preview at one pixel per stitch and row enables the finished effect to be visualised without the confusion.
- The preview image is without any skewing of the grid caused by having moved the grid corners independently.

Save Settings

This new option on the File menu saves all the Graphics Studio settings for a given graphic image file. Settings for up to 50 (instead of 25) graphic image files can now be saved, making it easy to start from the last saved point in a previous session after closing the program, or after working with a different graphic.

Image type reminder

Setting the Image Type to Picture sets the screen background colour to white, while setting it to Diagram results in a blue background - providing a reminder of which type of image is currently open.

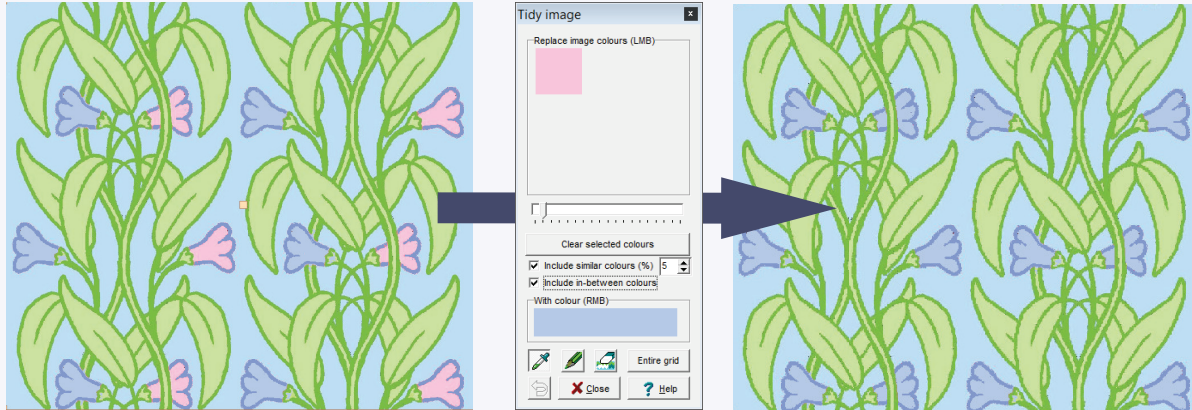
Remove yarns

The Yarn Colours window now has this button for deleting any selected yarns. It is useful for keeping the yarn palette uncluttered.



Tidy Image

Tidy Image enables changes to be made to a graphic image before it is converted to a stitch pattern.



A set of colours can be replaced by one other colour, using a pencil, a brush, or setting the entire selected area. This helpful feature can be used to remove unwanted colours from all or part of an image that would otherwise complicate the conversion to a stitch pattern.

[Return to start](#)

Miscellaneous

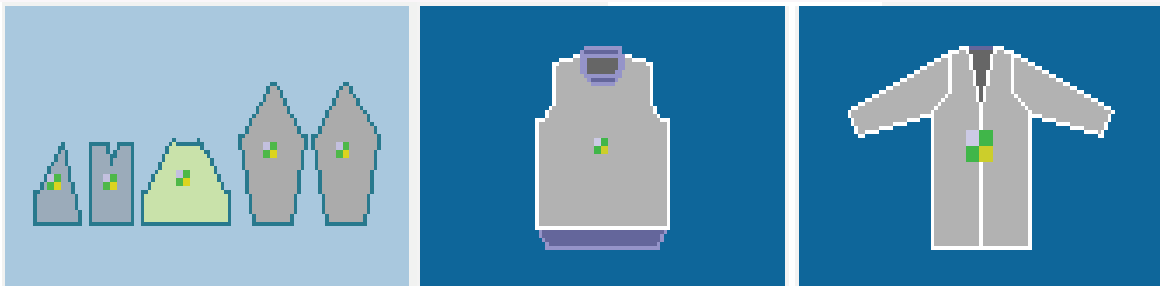
Thumbnails - General

More information displayed for stitch patterns

- When the type of file selected in the main Thumbnails window is stitch pattern files, and the Details option is ticked, hand knit patterns are now shown using the same kind of knit method code as is displayed in the title bar of the main Stitch Designer window, ie Hk, Hp, Hgk, or Hgp. If knitted Circular, a letter O is added to the code. The same code is now also shown under the enlarged pattern at the bottom left corner of the main Thumbnails window.
- When stitch patterns are sorted by knit method, the sorting of hand knit patterns is now in the sequence of Hk, Hp, Hgk, and Hgp, and then by whether Flat or Circular. In DesignaKnit 8 all hand knit patterns could be shown together but sorted only by filename.
- Clicking once on a file in the Thumbnails dialogue shows an enlarged preview at the bottom left hand corner. If stitch symbols are present, they are shown in the correct KnitWrite characters. This is an improvement on DesignaKnit 8 where all stitch symbols other than the main stitch were shown only as black or white rectangles.

More information displayed for shape files

Shapes thumbnails now include information about integration with stitch patterns. For garments designed at least partly in Original Pattern Drafting, garment pieces that have been integrated with stitch patterns are tagged with a small coloured icon at their centre. Garments that were designed purely in Standard Garment Styling cannot display their individual pieces and only show a tag for the entire garment. The tag is large if all pieces are integrated with a stitch pattern, small if only some pieces are integrated and absent if none of the pieces are integrated. The colours used for the tag are roughly the same as those in the icon that Windows uses for stitch pattern files.

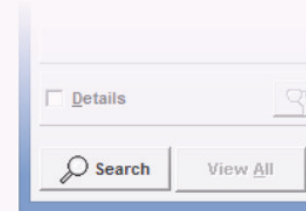


More responsive buttons

In DesignaKnit 9 the buttons at the bottom of the thumbnails dialogue can be clicked and acted on before the thumbnails have been completely drawn, unlike DesignaKnit 8 where they did not become visible or usable until all the thumbnails had been displayed.

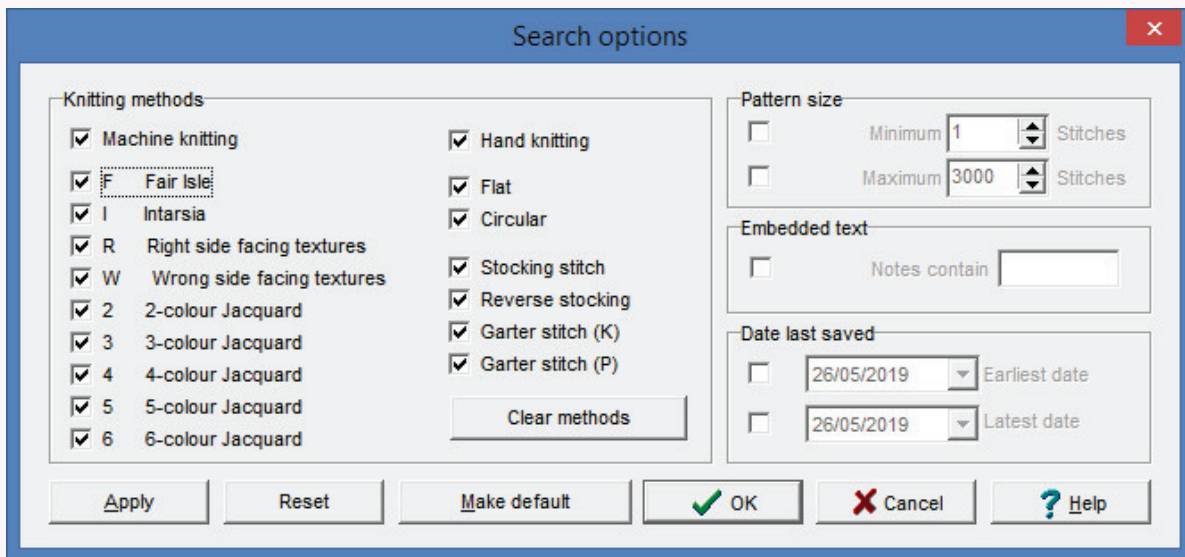
Thumbnails - Search

Thumbnails dialogues have a Search button at the bottom left which opens a Search Options window in which criteria can be ticked to narrow the selection of files that are shown.



Search options for stitch patterns

The Search Options dialogue for stitch pattern files can be used to search for files matching a combination of knit methods, and this has been extended in DesignaKnit 9.



For hand knit patterns, selection can now also be made between Flat and Circular, and between Stocking Stitch, Reverse stocking, Garter stitch (K), and Garter stitch (P).

The new 'Clear methods' button removes the ticks from all the knit methods to make it easier to select just one method. There is also a new tick box to cover all machine methods and another to cover all hand knit methods.

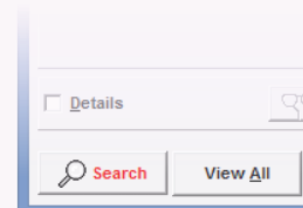
Patterns can now be selected in a certain size range that is based on number of stitches, which enables knitters to find all patterns that fit a certain size of punch card.

Search options for shape files

The Embedded Text field can now be used to search on filenames of integrated stitch patterns or background image graphic files as well as the notes that may have been entered in the Tensions dialogue. It is therefore possible to see which shape files have been integrated with a particular stitch pattern and / or which files have been derived from a particular background image.

Reminder that some files have been excluded

When a Search has been specified, the Search button in the main Thumbnails dialogue is now highlighted in red, to provide a reminder that some files are being excluded from the Thumbnails display.



Printouts

Yarn Calculation Printout

The Yarn Calculation printout now includes estimates for rib including any neckband (for garments designed purely in Standard Garment Styling).

Yarn name	Stitches	Grams
BLUE	25907	215.89
GREEN	3776	31.47
PINK	6040	50.33
RED	6331	52.76
light blue	3760	31.33
Shape Only	99822	831.85
<hr/>		<hr/>
Totals	145636	1213.63
Estimates for rib are based on the sample and the rib tensions (35.00 x 42.50)		
FRONT rib	5022	34.33
BACK rib	5022	34.33
SLEEVE - RIGHT rib	2214	15.14
SLEEVE - LEFT rib	2214	15.14
Entire neckband	3723	25.45
<hr/>		<hr/>
Totals	18195	124.39
<hr/>		<hr/>
Total Grams		1338.02

Printouts and fabric texture

The rendering of fabric texture in the Stitch Pat Picture and Garment Picture printout formats has been improved in DesignaKnit 9 and more closely matches the Stitch Designer screen.

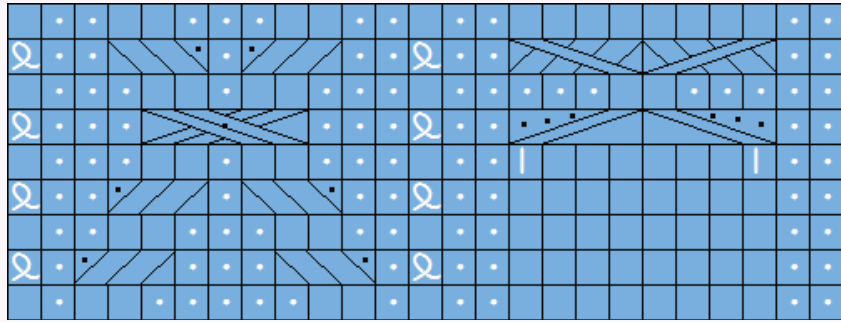
Better stitch templates for Jacquard

26 J2		26 CC4		27 CCD	
25 J1		25 CC1		26 CCA	
24 J1		24 CC1		24 CCA	
23 J3		23 CC3		23 CCC	
22 J3		22 CC3		22 CCC	
21 J2		21 CC4		21 CCD	
20 J2		20 CC4		20 CCD	
19 J1		19 CC1		19 CCA	
18 J1		18 CC1		18 CCA	
17 J3		17 CC3		17 CCC	
16 J3		16 CC3		16 CCC	
15 J2		15 CC2		15 CCB	
14 J2		14 CC2		14 CCB	
13 J1		13 CC1		13 CCA	
12 J1		12 CC1		12 CCA	
11 J3		11 CC3		11 CCC	
10 J3		10 CC3		10 CCC	
9 J2		9 CC2		9 CCB	
8 J2		8 CC2		8 CCB	
7 J1		7 CC1		7 CCA	
6 J1		6 CC1		6 CCA	
5 J3		5 CC3		5 CCC	
4 J3		4 CC3		4 CCC	
3 J2		3 CC2		3 CCB	
2 J2		2 CC2		2 CCB	
1 J1		1 CC1		1 CCA	

Stitch Template and Integrated Template printouts for Jacquard patterns have been improved when row numbers are included. If a colour changer is not in use, or not all yarns have memo numbers assigned, the printout now shows 'J' plus the Jacquard yarn sequence number (the left-hand example). When colour changer positions have been fully assigned by allocating Memo numbers, the printout now shows the colour changer feeder number (or letter) instead of the Jacquard yarn sequence number. Colour changer positions are indicated by CC plus a number for Brother (middle example) or a letter for Silver Reed (right-hand example).

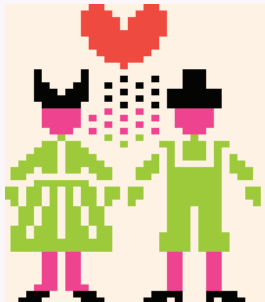
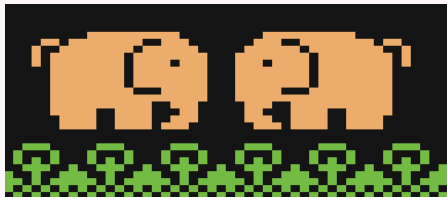
Improved stitch cable diagrams

When stitch cables are drawn in diagram mode, stitches that are to be purled on the row of the crossing are now marked with dots, in the same colour as the grid and other cable markings.

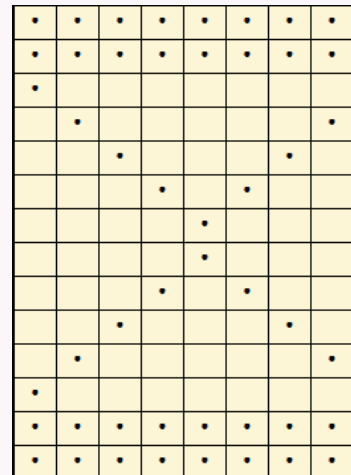
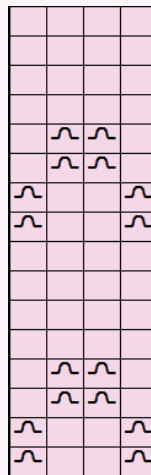
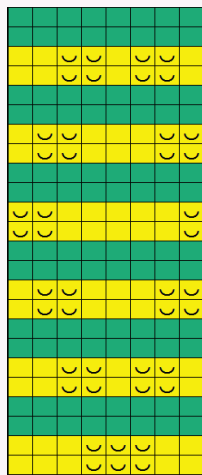
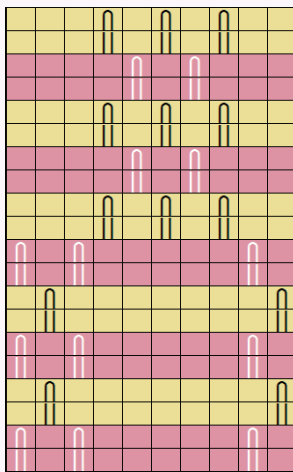
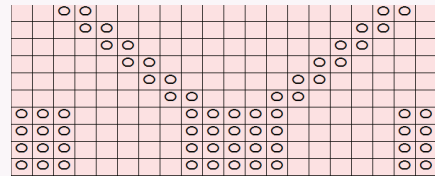


Better presentation of Stitch World patterns

The patterns are now presented in colours matching the Stitch World book.



Tuck, slip, thread lace, weave and garter patterns are drawn with the appropriate stitch symbols and automatically produce the correct needle selection.



This document contains more detailed information about how Stitch World patterns have been presented: https://softbyte.co.uk/dk9web/DK9_StitchWorld.pdf

Other new miscellaneous features

Default folders

Default folders can now be configured independently in all relevant sections for shape files, stitch pattern files, graphic image files for Original Pattern Drafting's Background Images and for Graphics Studio. The new Default Folder menu options can be found in the relevant File menus and an option is provided in all cases to *Continue using the same folder used for the previous open or save.*

Use of colour changers

The use of a colour changer is now a property of a stitch pattern rather than a property of the selected knitting machine, and it can be set in Method of Knitting. Different stitch patterns can be saved with different colour changer settings, which means that it is no longer necessary to adjust the colour changer setting for each pattern that is currently being knitted or printed.

Knitting machine setup now contains a default colour changer setting that allocates the setting for a new stitch pattern at the point that it is created.

Memo and colour changers

For Fair Isle, texture patterns and for Jacquard, yarns can now be assigned to colour changer feeder positions by assigning Memo numbers to the yarn colours. This is done using Palettes / Memo in Stitch Designer.

Passap technique numbers

Technique numbers for E6000 and E8000 machines are better supported in DesignaKnit 9. The technique number is stored with the stitch pattern rather than as a global setting, so that a technique can be allocated at the design stage as part of the knitting method. Unsuitable Technique numbers will generate error messages. Knitting machine setup for the E6000 and E8000 now includes a default technique number that allocates the technique number for new stitch patterns when they are created.

The technique number for the current pattern is shown in the main window title bars. When knitting shape-only with these machines, the technique number is also included in the shape-only options so that the right number of carriage passes per row is automatically used for interactive knitting.

Selecting a garment piece

When a garment piece is being selected from a list, the names of any stitch patterns that have been integrated with the pieces are now also shown in the list.



More space for notes

The Tensions dialogue for shape files contains a "Notes about this shape file" section in which notes can be written freely as the space is no longer limited to 4 lines of 50 characters. These notes are now searchable using the Thumbnails Search options.

Over 100 other improvements

These include extra kinds of error checking, additional context sensitive help buttons, clearer on-screen instructions, more knitting machines in the available list, and many other operational and cosmetic changes.

The Help and Manuals have been rewritten extensively. The manuals are included as PDF files that can be printed by the user.

Computer system requirements

- Windows XP or later (32-bit or 64-bit operating system). Mac owners can install Windows under Parallels and run DesignaKnit in that way.
- Screen size at least 800 x 600 pixels for the DesignaKnit program and at least 720p (1280 x 720 pixels) for on-line tutorial videos.
- 600 Mbytes free hard drive space.
- For the optional cable links, a free USB 1.0, 2.0, or 3.0 port is required. (This does not apply to the HandKnit product level).
- Delivery: CD and/or internet download.

How to upgrade

Countries with a distributor:



If you are resident in Australia, Austria, Belarus, Canada, Czech Republic, Denmark, Estonia, Finland, France, Germany, Lithuania, Moldova, Netherlands, New Zealand, Norway, Russia, Slovakia, Sweden, Ukraine, or United States, please contact your DesignaKnit distributor for prices and how to upgrade.

Contact info is here:

<https://softbyte.co.uk/contact.htm>



UK and all countries without a distributor:

<https://softbyte.co.uk/upgradingtodk9.htm>



Soft Byte LTD

Quarry Lane, Nantmawr, Oswestry,
Shropshire, SY10 9HH, UK.

Tel (UK) 01691 828556

info@softbyte.co.uk
<https://softbyte.co.uk>

[Return to start](#)

ERROR: undefined
OFFENDING COMMAND:

STACK: